

EXPLORE.

THE KATHERINE REGION VISITOR GUIDE

MATARANKA – NITMILUK GORGE – PINE CREEK



Gorge tour with Nitmiluk Tours

CONTENTS

South of Katherine	4-7
Mataranka	4-5
Elsey National Park	6
Bitter Springs	6
Cutta Cutta Caves Nature Park	7
Katherine	9-19
The Katherine River	10
Attractions	11-13
Katherine Region Events	16
Shopping	17
Accommodation	19
Nitmiluk National Park	20-22
Nitmiluk National Park	20
Jawoyn People	20
Nitmiluk (Katherine) Gorge	21
Leliyn (Edith Falls)	22
Umbrawarra Gorge Nature Park	22
Traveller Tips	18
Road Games	23
Tourist Drives + Distance Grid	24-25
Maps	
Katherine Region	3
Mataranka	5
Katherine Town Map	14-15
Nitmiluk National Park	20
NT Drives	24



When crossing from Queensland into the Northern Territory you need to put your clocks back ½ hour. Neither place has daylight saving.

South Australia and the Northern Territory usually share the same time, except from October to March, SA is one hour ahead.

If crossing from Western Australia into the Northern Territory add one and a half hours.

Published & Distributed by



**SCAN +
DOWNLOAD +
LINKS!!**

Make the most of the Guide-on-line while you are in Mobile range. Easy links to NT Parks Fact Sheets, websites and other handy tips.

marketing@absoluteme.com.au

www.exploreoz.com.au

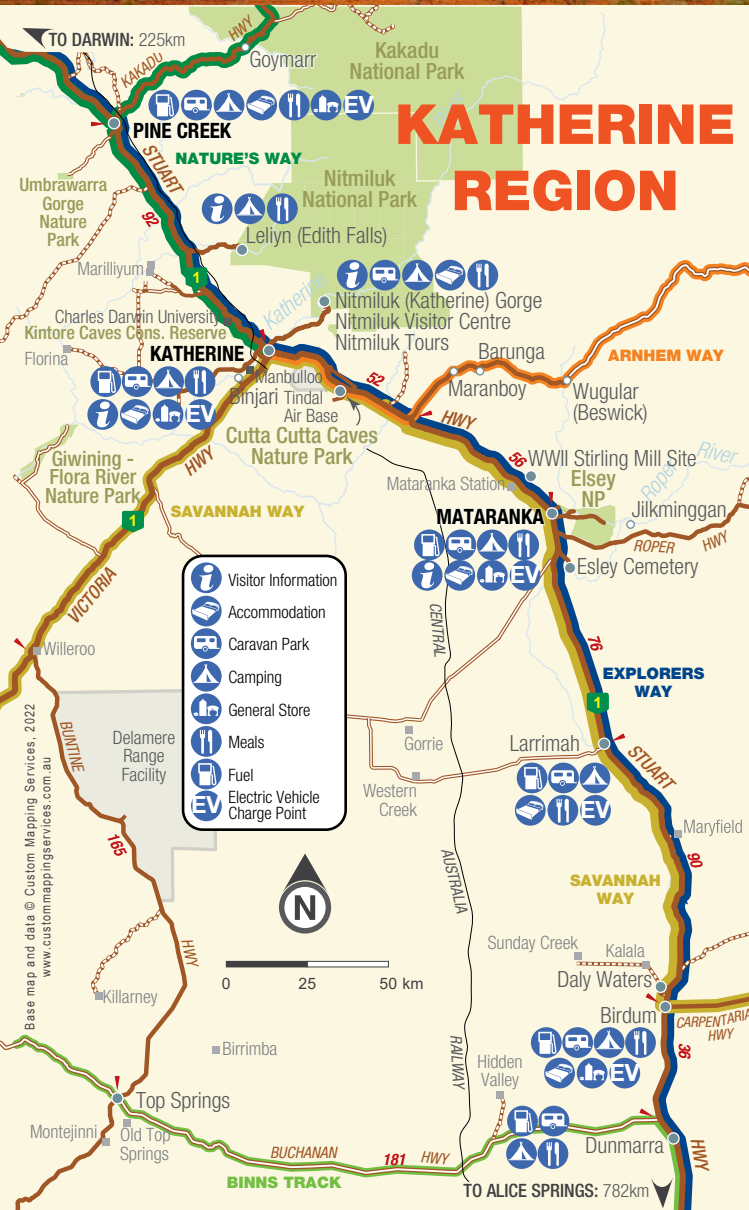
Photo Credits: Tourism NT Image Library, Shutterstock, Simon Ferguson - Territory Wildlife Park, Katherine Museum, Nico Liengme

Front Cover: Tourism NT / James Fisher Nitmiluk Tours

Graphic Design: Gap Road Design Co • gaproad.com

Some activities may be unsuitable or risky based on physical exertion or required fitness level. The information provided is a guide only and the products & services mentioned may change without notice.

All information included in this guide is for general use only. Times/Fees/Dates are subject to change without notice. All images are subject to change and may not reflect each product or service.



DID YOU KNOW?

Airbags go off with leg-breaking force -
DON'T PUT YOUR FEET ON THE DASHBOARD!



Mataranka Thermal Pools

SOUTH OF KATHERINE

EXPLORERS WAY

Travelling along the Stuart Highway, explore historic points and markers, iconic Wayside Inns, termite mounds; just some of the fascinating things to make part of your journey interesting and great to explore!

MATARANKA

Mataranka is a small pastoral town, made famous by the novel *We of the Never Never*, written by Jeannie Gunn. The story is about the nearby Elsey Station, written in 1908, and an autobiographical novel about the author's experiences and daily life, in 1902 at the station.

Along the main street of Mataranka offers plenty of reasons to stop in and top up for a few days of adventure.

Located behind the Roper Gulf Regional Council office, wander through the 'Never Never' Museum and browse the displays featuring local Aboriginal custodians, the Mangarayi and Yangman people, Overland Telegraph Line construction, the North Australian Railway and the World War II influences.

A family friendly town, there is plenty parking near the skate park offering tables and chairs and toilets. Scattered through the park on the northern end are assorted statues depicting the people from the Elsey Station in 1902, including Aeneas Gunn and wife Jeannie and a young girl known affectionately as 'The Little Black Princess' and her dog.

Approximately 13kms north of Mataranka, a historic site lays just off the road. The WWII Stirling Mill was in operation in 1942 and was important during the construction of the Gorrie Aerodrome, 10kms north of Larrimah.

3 DAYS MATARANKA

DAY 1

- Never Never Museum & Park
- Bitter Springs Thermal Pools

DAY 2

- Mataranka Thermal Pools
- The Elsey Homestead Replica

DAY 3

- Elsey National Park highlights
- Old Elsey Cemetery
- Bush Walks
- Fishing





The one stop shop, at the north end of town

- Café & takeaway food
- Grocery store
- Fishing & camping gear
- Mataranka Bakery & Rosies Chicken
- Clean amenities
- Best coffee & pies in town!

Ph: 08 8975 4571 matarankaroadhouse.com.au
14 Roper St Mataranka NT

BP MATARANKA ROADHOUSE AND CABINS is your one stop shop to fuel and stock up, with a discount for seniors to take advantage of! Enjoy a wonderful art gallery, fantastic coffee & café area, all your necessary travel supplies, you can even check out their great range of camping and fishing gear.

MATARANKA DRY SEASON MARKETS
May – September
SUNDAYS 9AM



UNCONVENTIONAL COMPASS

Hold your watch horizontal to the ground, point the 12 towards the sun.

Mid-point between the 12 and hour hand indicates the north-south line.



Elsey Cemetery National Park

ELSEY NATIONAL PARK

This is a popular place for boating and fishing fans, along the serene Roper River. With ramps at 4 Mile and 12 Mile offering an easy launch for your canoe or boat, you can easily spend a day paddling, fishing and exploring this stunning river.



Bushwalk through pockets of rainforests, discovering the park's riverine and rainforest species, on the easy Botanical Walk.

Visit the Elsey Homestead Replica, built in the 1980's for the film adaptation of the novel, the building is a reconstruction of the original homestead.

Explore the Old Elsey Cemetery, just south of Mataranka, with graves dating back to 1926, with many final resting places of the local characters written about in the novel.

HOW MANY SPECIES IN ELSEY NATIONAL PARK?



150+ Birds



32+ Mammals



15 Frogs



15+ Fish



50+ Reptiles

BITTER SPRINGS

A short 2km drive off the Stuart Highway, Bitter Springs is a must do, for a dip or a day to two. Along the Roper River, discover clear thermal springs, famous for the blue highlights and clear waters. Set amongst tropical woodlands including paperbark forests and near pristine stands of the *Livistona mariae* fan palm, throughout the Elsey Park there are over 300 plant species.

The thermal pools in the park, has spring water rising from under the ground, at a rate of 30.5 million litres per day. The 34°C water is then contained in pools surrounded by paperbark and palm forests.



Bitter Springs



Cutta Cutta Caves

CUTTA CUTTA CAVES NATURE PARK

Accessed off Stuart Highway, about 75km north of Mataranka and 30km south of Katherine, Cutta Cutta Caves span nearly 1500 hectares of Nature Park, the sole publicly accessible limestone caves in Australia. Nitmiluk Tours offer cave tours for a fee. Formed millions of years ago, these caves, situated approximately 15 meters underground, are still actively growing. The karst landscape provides habitats for wildlife. Enjoy a 20-minute Tropical Woodland walk amidst tropical savannah, and access the 650m Karst Walk exclusively on tour. Cutta Cutta, meaning 'many stars' in Jawoyn, was historically off-limits to Aboriginals, who believed it housed the stars at night. Initially dubbed Smith's Cave by a stockman in 1900, it was renamed 16 Mile Cave during World War II.



Cutta Cutta Caves Guided Tour

Delve 15 meters below the surface to discover the amazing limestone caves. (Enclosed shoes are mandatory - no thongs, crocs, sandals, hiking sandals) Guided Tours are the only way in which to see the Cutta Cutta cave. 27 kms south of Katherine



Cutta Cutta
Caves
Katherine

nitmiluktours.com.au

Tour Times 9am 10am 11am 1pm 2pm 3pm

1300 146 743

Parks & Wildlife have introduced an online booking system. Check all Parks for site availability prior to arrival.



NORTHERN
TERRITORY
GOVERNMENT



Frilled Neck Lizard

WILDLIFE

Birds like the Common koels, Figbirds and Bowerbirds help disperse seeds and pollinate flowers along the rainforest floor. You may be lucky to see the Hooded Parrot or the endangered Gouldian Finch. Various Lizards and the harmless Brown Tree Snake are often seen with 5 species of bats, including Ghost & Horseshoe that are rarely seen. Keep a look out for Euro, Agile Wallaby and Antilopine Wallaroo.



KATHERINE

Katherine has a fascinating history. Ancient Aboriginal culture blends with more recent European settlement, combining to make this town and surrounding region the special place that it is today. Situated on the Katherine River, 320kms southeast of Darwin, Katherine is known as the place where “the outback meets the tropics” and is the central hub of the Savannah Way, which stretches from Cairns in Queensland, right across to Broome, W.A.

The town site of Katherine, originally an 1870 settlement on the south bank of the river for which it was named (the present Knott’s Crossing) moved 3km downstream to the north bank. This location was named Emungalan (the Indigenous name for “Place of Stone”) and a railhead for the North Australian Railway operated here from 1917 to 1926. This township quickly grew to 200 people, 90% of whom were male!

The construction of the high-level railway bridge in 1926 established the final location of Katherine town, back on the south bank. Very little remains of Emungalan other than a small cemetery and a few building relics. This final settlement included a new railway station, and the town became an important transportation link. The Great Depression era followed, bringing many challenges, which continued through until World War II.

DAGOMAN – WARDAMAN – YANGMAN

This is the traditional lands and a meeting place for Dagoman, Wardaman and Yangman tribes/people whom had similar language/ dialect, skin/ kinship, ceremonial and Lore systems. Katherine was their historical common ground meeting place for thousands of years.

DAGOMAN WORDS	
*Similar references to animals other words were also used for Wardaman and Yangman people	
DAGOMAN WORD	WORD MEANING
Jekban	Plain Turkey
Garngma	Kangaroo
Bardanin	Fish
Yiwung	Black Currant
Gurlid	Green Plum
Ngulu	Skin/Kin Group
Warrdija	Crocodile
Barmgoon	Woman
Ibiyan	Man

Skin names Nangala, Nalyidi, Nawala, Nangari, are the same for Dagoman, Wardaman and Yangman people.



The Ghan

WORLD WAR II saw a significant military presence in the NT, to protect Australia's northern shore from the outbreak of war in the Pacific Ocean. Katherine became the southern most point of bombing by Japanese aircraft, resulting in the largest bomb crater in Australia!

THE HIGH-LEVEL BRIDGE was constructed in 1976, at the cost of a million dollars. Finally, there was a reliable means of vehicle crossing of the Katherine River. The bridge was the highest road bridge built anywhere in the Northern Territory and still provides reliable crossing to larger vehicles and road trains to this day. The bridge was named the Eugene Betti bridge after one of the construction foremen in 1991.

JOHN MCDOUALL STUART passed through the region in 1862. Within 10 years the Katherine Telegraph Station was built. The completed Overland Telegraph Line bisected Australia and laid the groundwork for the railway from Adelaide to Darwin which commenced in 1878 but wasn't completed till 2004!

KATHERINE RAILWAY

works were intended to link Darwin (then known as Palmerston) with Port Augusta in the south. The line made it to Pine Creek in 1889, Katherine in 1926, and 8km south of Larrimah in 1929, but work ceased, and the line closed in 1976. The dream of the north-south line languished until that final section was finished through to Alice Springs in 2004, enabling passengers to travel all the way through from Adelaide to Darwin on the famous 'Ghan.'



Old Railway Bridge

KATHERINE AVERAGE TEMPERATURES

	Jan	Feb	Mar	Apr	May	Jun	Jul	Aug	Sep	Oct	Nov	Dec
High	35°	34°	35°	34°	32°	30°	30°	33°	35°	38°	38°	37°
Low	24°	24°	23°	20°	17°	14°	13°	16°	20°	24°	25°	24°

DID YOU KNOW? CROCODILES

- Replace up to 4000 teeth in their lifetime
- Lifespan of 35-75 years
- Top swimming speed 35Kph
- Can grow between 1.5 and 7 metres





Eugene Betti Bridge

THE KATHERINE RIVER

The Katherine River, named by John McDouall Stuart in 1862 after James Chambers' daughter, originates in Nitmiluk National Park and flows through the town, serving as a key tributary of the Daly River. It descends 384m over 328kms. Major floods occurred in 1957 and 1974, and in 1998, Cyclone Les, rainfall in a 48 hour period, caused devastating flooding, evacuating two-thirds of the town. In 2006, a state of emergency was declared when the river peaked at 19 meters. Katherine's history is intertwined with the railway, with the town relocating twice during its construction, settling in its current location in 1926.

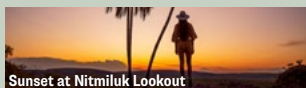


SUGGESTED ITINERARIES FOR THE KATHERINE REGION

7 DAYS KATHERINE

DAYS 1-3

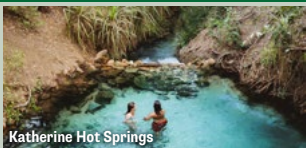
- ▶ Nitmiluk (Katherine) Gorge
- ▶ Spotto along the way!
See page 23
- ▶ Cruises - Canoe
- ▶ Heli - Cultural Experience



Sunset at Nitmiluk Lookout

DAY 4

- ▶ Mimi Art Gallery
- ▶ Street Art collection
- ▶ Shopping - stock up at
Rod & Rifle Tackleworld



Katherine Hot Springs

DAY 5

- ▶ Katherine Museum
- ▶ Low Level Nature Reserve
- ▶ Katherine Hot Springs

DAY 6

- ▶ Fishing

DAY 7

- ▶ Leliyn (Edith Falls)

BARRAMUNDI FUN FACTS!

- Barramundi are called **Martbiyn** by the Jawoyn, meaning "**large-scaled silver fish**"
- Most are born male, then turn into females at 3-4yrs old
- Have been recorded over 1.2m long & weighing over 40kg
- Can produce upwards of 32million eggs in a season





Katherine Hot Springs

ATTRACTIONS

KATHERINE HOT SPRINGS

Just a 5-minute drive from Katherine Post Office, these thermal springs offer a refreshing dip. Nestled along the banks of the Katherine River, the springs consist of clear pools, with the top pool being the direct source. Water temperatures range from 25-30 degrees Celsius. Take a swim and unwind in the thermal waters.

Before or after your swim, explore a scenic walking trail with informative signage. Relax with a picnic in a shaded grass area, equipped with tables, chairs, toilets, and a Pop-Up Café. Open daily from 7am to 7pm. Note: Access may be limited during the Wet Season (September - April) due to river levels. The main pool is wheelchair accessible with handrails and rock-formed steps.



The main pool has a wheelchair access ramp, stainless steel hand rails and steps formed out of rock.

LOW LEVEL NATURE RESERVE

Known as Gowutjima to the local Aboriginal people, this area has been a vital resource hub for generations. In the 1930s, travelers shifted to the Low Level river crossing from Knotts Crossing. The Low Level Bridge, constructed during World War II, facilitated traffic over the Katherine River. Beneath it lies a concrete weir, offering stunning photo opportunities as water cascades to the lower level. The area is inaccessible during the wet season (Dec - April) but perfect for swimming during the Dry season, with depths of 1-2 meters along the banks. Families can enjoy rock pools and a grassy picnic area with playground, BBQ, and toilets on the western side.



Low Level Crossing



Dr. Clyde Fenton OBE

HISTORIC HOUSES, INTERESTING ICONS AND A MEDICAL MAN

The history of a region can offer an insight to what it took to establish the thriving community you see today. The pioneers of a town, are people who do what they can do, the best they can, and the whole community benefits and grows. Katherine is full of characters, reminders and memories, and shares them well. It's makes it easy to explore so many of them.



Overland Telegraph

DR CLYDE FENTON OBE was a self-taught pilot who flew without navigation aids. He funded his own aircraft and served as the Government Medical Officer in Katherine from March 1934. His aerial rescue service evolved into the Northern Territory Areal Medical Service. During WWII, he joined the RAAF, making emergency medical flights from Manbulloo airstrip. His legacy includes a primary school named after him.

See Katherine Museum Heritage Trail Points of Interest on page 14-15



O'Keefe Residence

THE O'KEEFFE RESIDENCE, restored by the National Trust in 1988, was built in 1942 amid post-war housing shortages. Constructed from local materials like Cypress pine, iron sheeting, bark ceilings, and flywire, it exemplifies bush innovation. Named after its last occupants, John & Olive O'Keefe, dedicated locals who contributed greatly to the community.



EXPLORE THE HISTORY OF THIS FASCINATING REGION



- Diverse displays of people place and culture
- Dr Clyde Fenton's, the flying doctor, iconic Gypsy Moth



Phone 08 8972 3945
www.katherinemuseum.com.au
www.facebook.com/KatherineMuseum
 20 Christie Road, Katherine NT (enter from Gorge Rd)
 Admission fees apply



Katherine Outback Experience

KATHERINE OUTBACK EXPERIENCE

Owned by Golden Guitar winning singer songwriter, Tom Curtain, the national award-winning Outback Show celebrates life in the outback through real horse training and working dog demonstrations entwined with humorous bush tales. The two-hour Show is raw and real and an experience for all. See why it has been awarded NT's Best Tourist Attraction for the last four years.



Katherine Outback Experience








**BOOK
ONLINE**



Experience the real Australian Outback

Owned by national award-winning singer songwriter Tom Curtain, the 2-hour Outback Show celebrates life on the land through real horse-starting, live music, working dog demonstrations and story-telling.

Bookings essential







Katherine Outback Experience 115 Collins Road, Uralla, Katherine | Ph: 1300 818 612

Email: bookings@katherineoutback.com.au  katherineoutbackexperience.com.au

KATHERINE MUSEUM HERITAGE TRAIL

- 1 B11 Overland Telegraph Pylons 1870's
- 2 C9 Gallon Licence Store
- 3 C9 Knotts Crossing 1870's
- 4 E8 Old DCA Building
- 5 C10 Old Katherine Cemetery
- 6 D8 Hospital Site 1930's
- 7 E8 Old Airstrip 1930's
- 8 K6 Old Works Dept Site 1950's Hostel
- 9 C13 Railway Workshops 1940's
- 10 F17 Catholic Church Site 1950's
- 11 E14 Butchers Shop. M. Alwright's House 1947
- 12 F15 1930's House (Car Parts Store)
- 13 E13 Uniting Church
- 14 G14 Old Town Hall 1930's (CWA Building)
- 15 F13 Katherine Stores 1926
- 16 F13 Commercial Hotel (Crossways)
– Currently Stuart Hotel
- 17 F13 Picture Theatre, Dynasty's Rest 1950's
- 18 G13 1926 Railway Station

NATURE'S WAY EXPLORERS WAY

TO PINE CREEK: 92km



KATHERINE



Accommodation

- 1 A17 Cicada Lodge / Nitmiluk Cabins
- 2 D18 Beagle Hotel
- 3 A14 Discovery Parks - Katherine
- 4 U4 Manbulloo Homestead

Services

- 5 E15 Rod & Rifle Tackle World

Attractions

- 6 A17 Nitmiluk (Katherine) Gorge
- 7 P18 Cutta Cutta Caves Nature Park
- 8 Q18 Katherine Outback Experience

Art

- 9 G13 Street Art - Railway Terrace



Barunga Festival

KATHERINE REGION EVENTS 2025

MAY 2025

Big Horse Creek Barra Classic

3 - 4 May

kgfc.net.au

Mataranka Never Never Festival Rodeo

10 May

Katherine Run Festival

11 May

kmsc.com.au

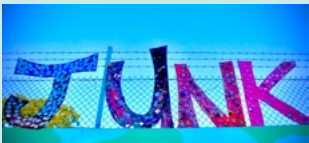
Mataranka Campdraft

16 - 18 May

Junk Festival

31 May

katherineregionalarts.org.au



JUNE 2025

Barunga Festival

6 - 9 June

barungafest.com.au

JULY 2025

Territory Day

1 July

territoryday.nt.gov.au

Teddy Bears Picnic and Show & Shine

5 July

4 Hour MTB

5 July

kmsc.com.au

NAIDOC Week Celebrations

6 - 13 July

www.naidoc.org.au

Katherine Show

18 - 19 July

www.katherineshow.org.au

Doggy Day

27 July

katherine.nt.gov.au/events

AUGUST 2025

Katherine Ultra Challenge

3 August

kmsc.com.au

Katherine Cup Race Day

16 August

katherineturfclub.com.au



Great Billed Heron



Hooded Parrot



Gouldian Finch



Crested Shrike-tit

FLOCK TO THE KATHERINE REGION

In Katherine, spot diverse birds like Gouldian Finches and Hooded Parrots. Travel north to Edith Falls Road or Pine Creek, or southwest along the Victoria Highway for Long Tail Finches and more. Eastward, from Cutta Cutta Caves to Central Arnhem Highway, find Black-tailed Treecreepers and Banded Honeyeaters.



KATHERINE COMMUNITY MARKETS

Saturdays throughout dry season 8:30am - 12:30pm
Night Markets last Saturday of each month 4 - 9pm
Closed in the wet season
katherinemarkets.com.au

SHOPPING

BOTTLESHOP HOURS

We know the NT is warm, thirsty weather, but if you purchase take away alcohol you just need to plan ahead. Most towns in the NT are a 'dry town' meaning that you cannot consume alcohol in public places within the town region.

Other regions may have adjusted hours so it pays to check the website to check the open times:

takeawayalcohol.nt.gov.au



SCAN ME

ROD N RIFLE TACKLE WORLD, a local family business has been looking after the locals and visitors alike for all their camping, fishing and hunting needs, for over 40 years. Stocking a huge range of your favourite brands, get expert knowledge, great tips from people who are passionate about all things outdoors.



SCAN ME



- Caravan Accessories
- Gas Refills • Fishing Gear
- Camping Gear
- Outdoor Clothing

YETI

08 8972 1020

rodrifle.com.au • 14 Second St, Katherine

CAMPING & CARAVAN ETIQUETTE

NOISE - Keep your music and noise to a level that is polite for your space only. If you are in a family park, which most are, children will always be children. Be tolerant.

PETS - You may love your pets, but others may not. Always have your animals on a lead, fenced in, or appropriately caged. Always pick up waste after your animal.

WATER - Check with each park if there is a fee for filling tanks due to drought. Some places are grateful for your grey water on the ground, others not so. Check first.

AMENITIES - Never empty your toilet cassette in the ablution block of any public toilet. Always clean up after yourself in shared bathrooms. Think of others.

SPEED LIMITS - Stick to the speed limit. You are on holidays. Slow down.

MIND YOUR SPACE - Don't cut through other people's sites, especially under their awnings, just to save a few steps. Be neighbourly.

RUBBISH - Dispose of your rubbish in bins provided. Otherwise dispose of it at your next opportunity.



WATCH FOR WEDGE-TAILED EAGLES!



Slow down if you see a Wedge-Tailed Eagle feeding on the side of the road. With huge wingspans of up to 3 metres they can be slow to take flight. These big birds of prey are easily injured and can do extensive damage to a vehicle. Slow down and be aware.

ROAD TRIPS - DRIVE TIPS

- Travelling through the NT involves vast stretches of open road, whether on the bitumen or off-road 4WD tracks. The highway speed limit through the Barkly Region is 130km per hour, unless otherwise signposted.
- Reduce to a safe slower speed on unsealed roads, and do not attempt 4WD tracks with a 2WD vehicle.
- Don't drive tired, long distances and extreme heat can cause driver's fatigue, so stop and rest frequently (every 2 hours) at regular rest stops.
- Many roads pass through national parks and stations. Avoid driving at dusk, dawn or in the dark as stock/wildlife may cross the roads. Do not swerve suddenly and safely reduce your speed.
- Don't drive in convoys, especially if towing a caravan. Allow at least 200m between vehicles, to allow road trains to overtake safely.





Discovery Parks - Katherine

ACCOMMODATION

Do It All at **DISCOVERY PARKS - KATHERINE** and discover the NT. From exploring breathtaking gorges and spotting local wildlife to enjoying family-friendly events and endless fun in the park, there's something for everyone to enjoy. Your Northern Territory adventure starts here.



Discovery
PARKS

Get ready for adventure

Stay at Discovery Parks - Katherine
and Do It All in the NT

BOOK NOW

discoveryparks.com.au



MANBULLOO HOMESTEAD



Shady, grassed sites, pet friendly rural caravan park on the banks of the Katherine River. Working cattle property, bird watching, bush walking and fishing.

P: 0477 126 014

E: manbulloohs@bigpond.com.au

www.manbulloohomesteadcaravanpark.com.au

BEAGLE HOTEL



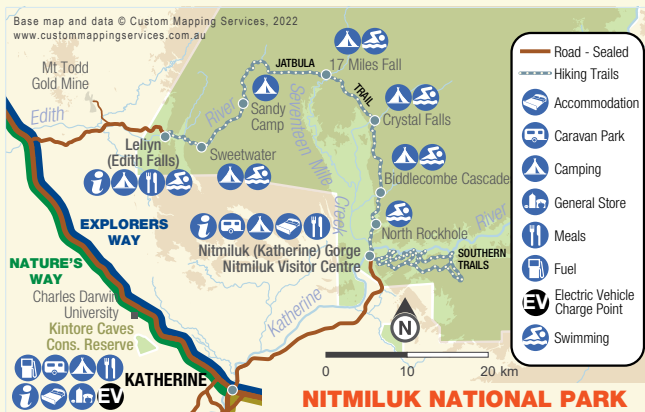
Beagle Hotel offers a range of clean, comfortable and affordable accommodation options for leisure travellers, workers and families in the heart of Katherine.

P: (08) 8972 3998

E: info@beaglehotel.com.au



beaglehotel.com.au



NITMILUK NATIONAL PARK

For thousands of years Nitmiluk has been the foundation of the Jawoyn Aboriginal people, providing an abundance of water and food, and a gallery of art and artefacts. Today it's a living testament of ancient Aboriginal culture.

The park's main entrance is located 30 kilometres northeast of Katherine via a sealed road. Keep a watch out for the many Wallabies - small Kangaroos - that are inquisitive of visitors.

Immerse yourself in the natural beauty and culture of Nitmiluk Gorge and National Park with an extended stay in the region or at the Nitmiluk Caravan and Camping grounds.

WHEN TO VISIT

The most comfortable time to visit Nitmiluk National Park is from May to September. During the wet season, flooding of the Katherine River may restrict the range of activities available and in some cases prevent access to the park.

ABOUT THE JAWOYN

Jawoyn is recognised among Aboriginal peoples over a large area of the Northern Territory's 'Top End'. It is an all-encompassing expression used in reference to language, culture, people and territory including 17 clans making up the group.

JAWOYN HISTORY

Nitmiluk is the Jawoyn name for Katherine Gorge. It is pronounced Nit-me-look, and literally means Cicada Place. The name was given by Nabilil, an important figure of the Creation Time. As he travelled through the country, he came to the Gorge where he heard the song of the Cicada, "Nit, Nit, Nit!"

The Nitmiluk (Katherine Gorge) National Park and Jawoyn Association logo is a painting by a deceased traditional owner of Nitmiluk. It depicts Bolung (the rainbow serpent), Nitmi (the cicada), mussels, fish and rocks. By tradition, Bolung still inhabits the deep pools of the second Gorge at Nitmiluk, and care must be taken not to disturb him.

MODERN DAY

Today, Jawoyn invite you to visit their country and to share the experience and grandeur of Nitmiluk Gorge. The mythical figure of 'Bula' travelled this land leaving his image as paintings in rock shelters - images that depict the stories of the Jawoyn people and can still be seen and admired today.



NITMILUK (KATHERINE) GORGE

Formed over millions of years, as the Katherine River, originating in Kakadu National Park, carved through ancient sandstone forming thirteen gorges. Stunning waterfalls, rapids and magnificent vistas of escarpments look down on this amazing landscape.

Freshwater crocodiles are seen sunbaking along sandbanks, while a variety of birds and wildlife surround you in a variety of habitat areas.

There are areas specifically for swimming and canoeing, a truly magnificent way to explore this ancient region.

“Our people - the Jawoyn tribe - are the traditional owners of the area now known as Nitmiluk National Park. Since the coming of white people we have been able to keep alive our traditions and care for our country through our Law.”

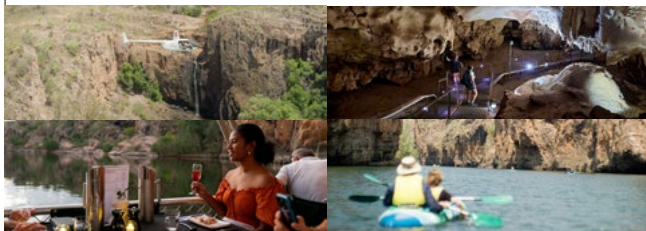
Experience

Nitmiluk



Gorge

Cruises • Canoe • Heli • Cultural Experiences



nitmiluktours.com.au

reservations@nitmiluktours.com.au

1300 146 743

  @nitmiluktours

  @cicadalodge



Nitmiluk
Katherine



Sweetwater Pool at Leliyn (Edith Falls)

LELIYN (EDITH FALLS)

Enjoy all year round, the refreshing water of Leliyn (Edith Falls). Picturesque waterfalls flowing into great swimming pools, with stunning walks throughout.

Located on the western side of Nitmiluk National Park, Leliyn is 60kms north of Katherine, as you travel further along the Stuart Highway.

Grassy campsites in bush settings make Leliyn a scenic spot where you can camp up for a few days or enjoy an afternoon, or day trip from Katherine, with gas BBQ's, picnic tables, toilets and showers, and a Kiosk for cool drinks and food.

Enjoy swimming in both upper and lower pools, or Sweetwater Pool if you are hiking or overnight adventure.

Leliyn is the finishing point of the 62km Jatbula Trail walking track, which begins at the Gorge end of Nitmiluk National Park.



SCAN ME

UMBRAWARRA GORGE NATURE PARK

This stunning gorge offers striking colours of sharp red cliffs and sandstone overhangs. Best visited early to mid-Dry season, you can swim in the rocky pools, lined with sandy beaches. An easy 1km walk along the creek into the gorge or wade, swim or rock-hop along the way.

Look carefully and see the Wagaman Aboriginal art on the gorge walls.

The carpark of the gorge was the site of a tin mine in the early 1900's.

Located 3kms south of Pine Creek, this unsealed road can become very dusty and corrugated, with steep dips and creek crossings for 22kms.



SCAN ME



THE CICADA – DID YOU KNOW?

- Only the males sing
- Females can lay up to 600 eggs
- Their songs can reach 120 decibels
- Can live for up to 17 years in the nymph stage

SPOTTO!

ARE YOU DRIVING TO NITMILUK (KATHERINE) GORGE?

Get the whole family to look out for these fun points of interest, while you are heading out to Nitmiluk Gorge or back. 5 points for each box you can tick below. Add another 5 points if you are the first to see the image below and call “Spotto”!



☐ Dog Head Rock



☐ Plane Crash



☐ Remote Bus Stop



☐ Shrek on a Bike



☐ Tonka Rockpile



☐ Wandering Poppy

FIND THE WONDER WORD!

Find every word in the list in order for the WONDERWORD to appear

E	L	F	A	L	L	S	P	P	M
S	E	E	G	R	O	G	I	E	A
A	L	T	X	P	N	R	N	L	T
D	I	A	L	I	T	I	E	I	A
A	Y	B	P	R	R	R	C	D	R
C	N	M	P	E	E	R	A	O	A
I	A	A	H	N	E	V	O	C	N
C	R	T	U	E	R	E	I	O	K
K	A	S	K	M	I	W	S	R	A
K	U	L	I	M	T	I	N	C	R

Crocodile
Mataranka
Nitmiluk
Gorge
Bat

Leliyn
Sun
Track
Katherine
Pine

Creek
Cicadas
River
Falls
Park

Swim
Camping
Trip

TOURIST DRIVES OF THE NT

These iconic drives showcase an ancient culture and the natural diversity of this spectacular Territory. Follow these ‘self-drive’ options and when you share your memories on social media include: #ExploreKatherine #ExploreOz so we can join your journey!

NATURES WAY

northernterritory.com/drive/natures-way

Darwin is your starting point, for a journey that reaches the ancient wonders of 3 National Parks, including Kakadu, Nitmiluk and Litchfield National Parks. All with their natural beauty, you can spot crocodiles along the banks of the river as you take a tour cruise along lily pad wetland, rich in bird life and stunning photo opportunities. Explore the rock art galleries, gentle and adventurous walking trails and plunge pools for cooling dips, before taking the loop back to Darwin.

SAVANNAH WAY

northernterritory.com/drive/savannah-way

This incredible 3700 kilometre drive traverses rugged and challenging country, from Queensland to the beauty of the Northern Territory, then journey onto Western Australia for an ultimate outback road trip. Passing through a variety of habitats, from savannah to tropical landscapes, journey through five World Heritage listed areas and 15 National parks. Camp out under big night skies, and marvel at ancient rock art or catch a famous Barramundi.

EXPLORERS WAY

tinyurl.com/2p95bs5m

Follow in explorer John McDouall Stuart’s footsteps on a trail he first blazed in the 1860s, on a 3000km drive. Pass through diverse landscapes and some of Australia most famous icons, explore the rich Indigenous culture on sealed highways between Adelaide and Darwin.

ARNHEM WAY

northernterritory.com/drive/arnhem-way

From Katherine to Nhulunbuy, on the Gove Peninsula, you need to be prepared for adventure. Explore one of Australia’s last unspoilt areas, with pristine beaches and stunning wetlands. You may be lucky enough to discover rare birds and native wildlife or catch a variety of fish. Be delighted by local artwork in these remote regions, strong in culture.

*A permit is required from the Northern Land Council and necessary to preserve the culture and beauty of the region.

										<div>DISTANCE GRID</div> <div>Measured in kilometres</div> <div>Approximate distances only</div>									
										ADELAIDE RIVER	ADELAIDE								
										2911	ADELAIDE RIVER								
										1384	ALICE SPRINGS								
										719	1038	2249	BARKLY HOMESTEAD						
										456	286	1098	1833	BARROW CREEK					
										2451	2432	2737	1759	4266	BROOME				
										1829	627	605	914	476	2443	DALY WATERS			
										589	1872	1211	1190	1497	113	3027	DARWIN		
										631	48	1872	580	556	866	518	2396	DUNMARRA	
										104	736	152	1976	475	456	762	623	2292	ELLIOTT
										1065	1696	1113	2937	491	919	200	1584	1331	ERLDUNDA
										618	255	576	1858	1198	1138	1484	299	3014	JABIRU
										315	316	273	1556	895	875	1181	203	2711	KATHERINE
										1152	1783	1199	3023	572	1005	286	1670	1268	KULGERA
										133	498	90	1739	712	653	999	385	2529	LARRIMAH
										209	422	167	1663	768	729	1075	309	2605	MATARANKA
										406	226	363	1646	985	965	1271	113	2801	PINE CREEK
										196	828	244	2068	383	371	678	704	2199	RENNER SPRINGS
										358	989	405	1801	222	211	508	876	2038	TENNANT CREEK
										333	964	381	2205	246	219	533	852	2063	THREEWAYS
										601	601	559	1270	1181	1159	1467	489	1997	TIMBER CREEK
										672	1303	719	2543	93	566	194	1190	1724	TI TREE
										466	1100	515	2342	88	363	397	985	1925	WAUCHOPE
										1311	1942	1359	3183	731	1164	446	1829	1576	YULARA

Wherever you go, take us with you

EXPLORE

OUTBACK SOUTH AUSTRALIA & THE FLINDERS RANGES VISITOR GUIDE

BIRDSVILLE TRACK - OODNADATTA TRACK - STRZELECKI TRACK
STUART HIGHWAY - COOBER PEDY - SA/NT BORDER
PORT AUGUSTA - LEIGH CREEK - ROXBY DOWNS

EXPLORE

THE RED CENTRE ART TRAIL

GALLERIES - ART CENTRES - ARTS EVENTS
LOCATION MAPS & MORE!

EXPLORE

THE KATHERINE REGION VISITOR GUIDE

MATARANKA - NITMILUK GORGE - PINE CREEK

EXPLORE

TENNANT CREEK VISITOR GUIDE

EXPLORERS WAY - BARKLY REGION - BINNS TRACK
KARLU KARLU / DEVILS MARBLES
IYTWELEPENTY / DAVENPORT RANGES

EXPLORE

THE RED CENTRE VISITOR GUIDE

COOBER PEDY - ALICE SPRINGS - TENNANT CREEK
ULURU-KATA TJUTA NATIONAL PARK
WATARRKA NATIONAL PARK / KINGS CANYON

Pick up a copy or
download our guides



explore  Z .com.au